



vapman  
vapor true nature

## The vapman-ritual

*Inspired by nature, through the perfect interaction of the 4 elements, vapman enables the best way to enjoy mother earths treasures. While being heated by **FIRE**, **WATER** allows the evaporation process of the herbs that **EARTH** provides us. The vapman-ritual is completed by deep inhalation of **AIR***

*vapman was created out of pure passion for life and nature and with the goal of enabling a deeper connection between people and plants. So it´s very important for us to have a positive impact helping to create a world where people and nature thrive for future generations*

**IT** Il contenuto di questo manuale in italiano può essere trovato sul nostro sito

**DE** Den Inhalt dieses Handbuchs finden Sie online auf unserer Website

**FR** Le contenu de ce manuel en français peut être trouvé en ligne sur notre site

**NL** De inhoud van deze handleiding in het Nederlands van onze website

**PT** O conteúdo deste manual em português do nosso sítio

**ES** El contenido de este manual en español de nuestro sitio

[www.vapman.com](http://www.vapman.com)

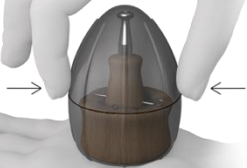


## How to enjoy vapman

*Vaping with vapman is like cooking your own food*

*The more you practice – the better it gets*

1. The hemp made case opens by a light press on the center line



2



1



2. disassemble the upper part of vapman by twisting it counterclockwise

3. The funnel can help to fill in your herbs. Use finely ground herbs to improve vapor-quality.



4. make sure that the edges of the golden heating chamber are free from herbs. If you see any - use **THIS** little metal pin to push them back inside.

5. Install the upper part



## Now to the heating...

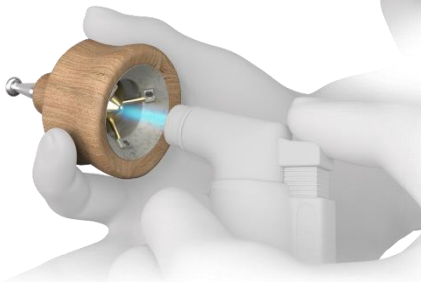
*Attention: hold vapman by the handle ring and use a jet flame lighter*

6. First, you have to set the flame to the right length. Here everyone has their own preferences, but most people like a length similar to the diameter of the filter - around 1.5 cm. With this flame length you should heat around three seconds. Flame length  
10 mm ~ 5 sec - 20 mm ~ 2sec.



15mm - 3s

20mm - 2s



7. Always remember the clue: **tip to tip for perfect heat**. Point the tip of the blue jet flame to the tip of the golden heating chamber. It's better to heat a bit less than for too long because you could run the risk of burning your herbs.



8. Once heated up, start enjoying: take a deep breath without stress and repeat as often as you like. On the middle piece there are three airholes, the more they get covered, the denser the vapor gets.

After some time, you'll get a feeling for your personal preferences of the vapor. If it feels harsh and hot it means you have heated for too long and if the vapor doesn't have enough taste you can heat a bit more.

9. As soon as there is no more taste, you can check the state of your herbs. When their color has turned into dark brown and they smell rusty, they no longer contain active ingredients and can be removed.



10. After each filling, give the filter a good rub on a piece of cloth or a paper towel. Clean the filter while it is still warm. This is the easiest way of removing any residue.

11. The hemp made case closes by lightly squeezing the two parts together.



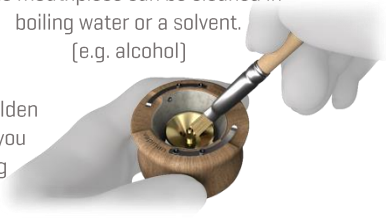
## Cleaning

*The vapman is an easy-maintenance device. Just follow these steps and it will last for a lifetime. For perfect functionality, neither the air-holes in the middle section nor the air nozzles should be clogged. You can remove residues with a needle.*

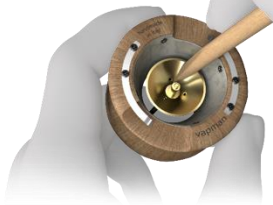


The mouthpiece can be cleaned in boiling water or a solvent.  
[e.g. alcohol]

For those who want to keep their golden heating chamber shiny: after use, you can brush it out with the cleaning brush [this won't affect the vapor quality at all]



For those who use concentrates: If you often use concentrates, the heating chamber gets often dirt. In this case you can use the backside of the cleaning brush to get the residues out of the chamber [if heated it's much easier].

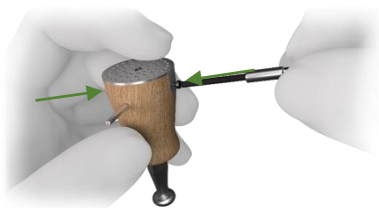




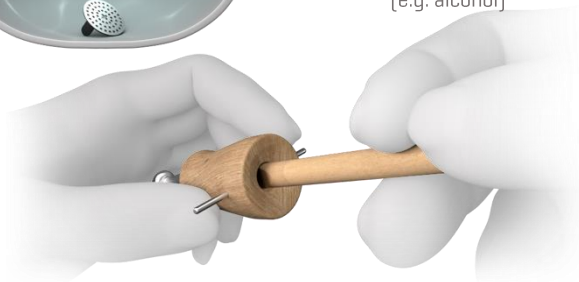
## Advanced cleaning

*In many cases, the advanced cleaning is not even needed, but when you feel particles of herbs in your mouth it's time to clean*

Unscrew **THESE TWO** screws to remove the sieve.



Put the sieve into boiling water or a solvent [e.g. alcohol]



Take the backside of the cleaning brush to remove residues from the inside of the middle piece.

## Lighter

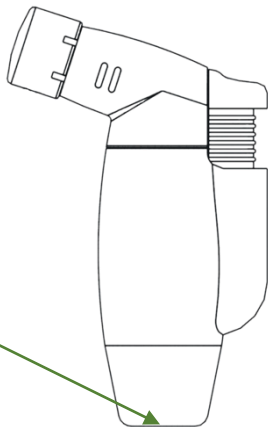
*vapman lighter is the ideal source of energy for vapman. It has a proportionally large tank volume which means that you don't have to think about refilling for a long time. This leads to a feeling of freedom and independence.*

**Manual Refilling gas:** The lighter works with butane, propane or the mixture of both gases. Place the lighter in upside down position. Insert the nozzle of the refilling canister into the lighter refilling valve and press down until the tank is approx. 3/4 full. It works best when the volume of the flame length is at minimum level.

**Ignition:** Remove the cap and press down the trigger slowly.

**Flame adjustment:** To increase the flame size, turn the adjustment valve **on the bottom** of the lighter counterclockwise, to reduce the flame size, clockwise.

**Tips and hints:** Lighters are sensitive to dust and fibers, always put the cap on after use. The lighter works better when the gas is warm - warm up the gas with your hands.



**Notes:** Handle vapman with care and avoid any pressure on the pan! If the copper pan is strongly overheated, the gold coating may start to flake off. However, vapman will nevertheless remain functional. The herbs should only be roasted, not burnt, otherwise smoke will be produced that can damage your lungs. Parts of the mica may flake off after frequent use - this is not unusual and has no impact on the lifespan of your vapman. Keep the products away from children and pets.

**Warranty:** If the goods provided by vapman GmbH contain a defect within 24 months of the delivery that is not due to natural decay or improper handling, vapman GmbH will replace the defective products for free. Any additional warranty claims issued by the customer shall be excluded. The instruction manual regarding the use and handling of the products are binding. vapman GmbH shall not assume any liability for problems or damages arising from non-compliance with this instruction manual. Warranty does not cover units that are lost, stolen, or physically damaged. In order to receive warranty support, proof of purchase must be provided from an authorized dealer.

**Disclaimer:** vapman is not a medical device and cannot diagnose, treat, or cure any illness or medical condition. If you have health problems, consult a physician before using vapman. The products and accessories of vapman GmbH are intended only for persons who have reached the required age and do not violate the laws of the respective country. vapman is not intended to be used with any illegal, medicinal or harmful substances, and is sold under the condition that it is not used for unlawful purposes. Any improper or unlawful use of vapman will invalidate the warranty. Unlawful use may further result in legal penalties including fines. The manufacturer, retailer, their staff, directors, and/ or shareholders are not to be held responsible for the illegal use of vapman or for any consequences resulting from its use. vapman is not intended to be used with liquids, concentrates and it is not suitable for tobacco products. Keep the products away from children and pets. By purchasing and using vapman products, you agree to indemnify and hold vapman GmbH harmless for any injury resulting from direct or indirect use. This statement has not been reviewed or evaluated by any agency or governmental body in any jurisdiction.

**Warning Lighter:** Ignite lighter away from face and clothing. Contains flammable liquid after filling. Do not expose to heat above 50 °C or prolonged exposure to sunlight. Never pierce or put on fire. After use, make sure the flame is completely extinguished. Extreme heat builds up above the visible flame. Take special care to avoid burns or fire hazards. Do not allow flame to burn for more than 10 seconds.



MOUTHPIEACE



MIDDLEPIECE



AIRHOLES

FILTER

HEARTPIECE



SPRING

HEAT PROTECTION

HEATING CHAMBER

NOZZLES

ALL parts are custom made in Italy & Switzerland  
from natural materials of highest quality